



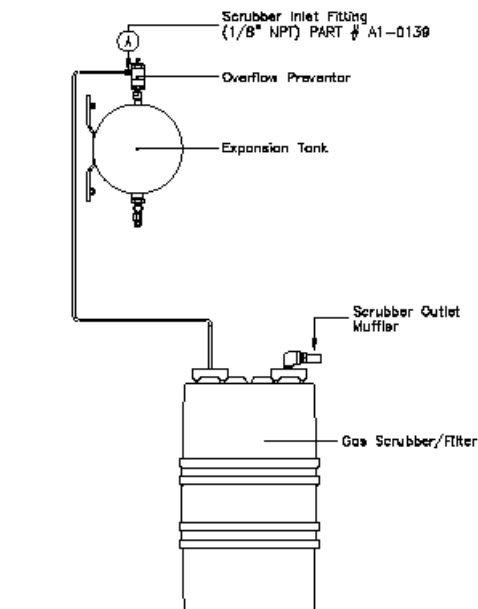
TECHNICAL BULLETIN

July 10, 2009

Topic: Gas Scrubber Installation

This bulletin is being generated in order to clarify the designed installation of YZ built 15 Gallon Gas Scrubbers. This Scrubber is designed to be connected to the Overflow Protector vent on the expansion tank of a NJEX system. This scrubber IS NOT designed to hold or maintain pressure; it is a non-pressurized flow through device. Refer to below bullets, and drawing 1L-0118 for additional installation information.

- The scrubber should be installed in a manner, which protects it from water accumulating on top of it, which could find its way to the inside of the scrubber.
- Devices, which could be affected by odorant back feed, should not be connected to a scrubber, like actuation vents from the NJEX system.
- Devices, which could create back pressure in the scrubber, should not be connected to a scrubber.
- When connected to the overflow protector of a NJEX expansion tank, additional vents, or other sources of gas should not be interconnected.
- If additional vents need to be connected to a scrubber, they should be connected to a separate scrubber other than the one connected to the overflow protector of a NJEX expansion tank.



Mike Sanders

YZ-Milton Roy
Sr. Technical Representative
2408 Timberloch Place
Suite B-10
The Woodlands, TX 77380
T: 281-362-6500