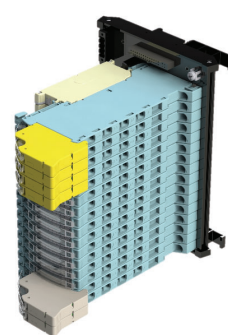
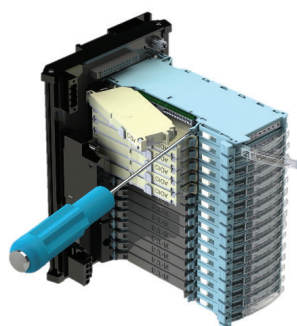
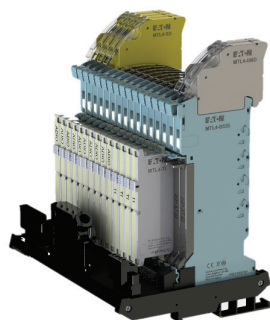
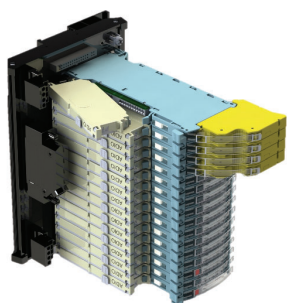


The new standard in marshalling

CROUSE-HINDS  
SERIES

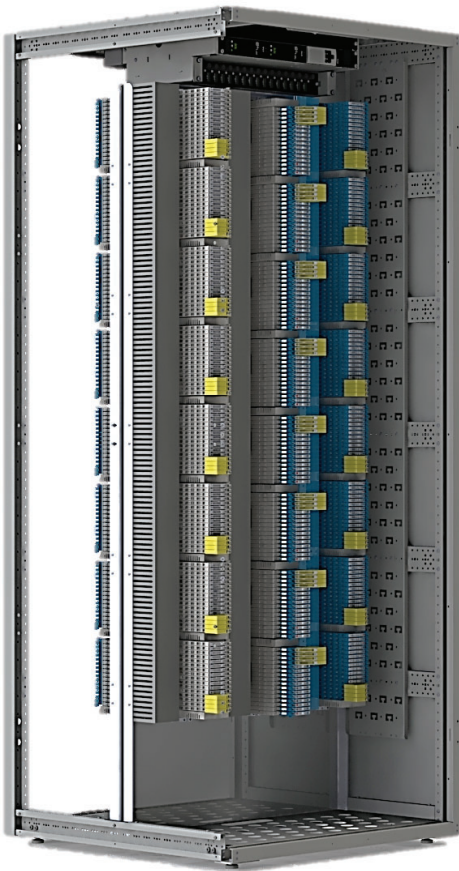
# MTL SUM5™ Smart Universal Marshalling Solution



**EATON**

Powering Business Worldwide

# Minimize CapEx and maximize investment return



## Introducing the MTL SUM5™, a universal marshalling and smart cabinet solution

Eaton's Crouse-Hinds Division now has an innovative and reliable marshalling solution that can reduce DCS cabinet requirements by 30 to 50%, significantly decreasing project infrastructure costs.

With the MTL SUM5, **we've combined five marshalling functions into ONE configurable and standard design.**

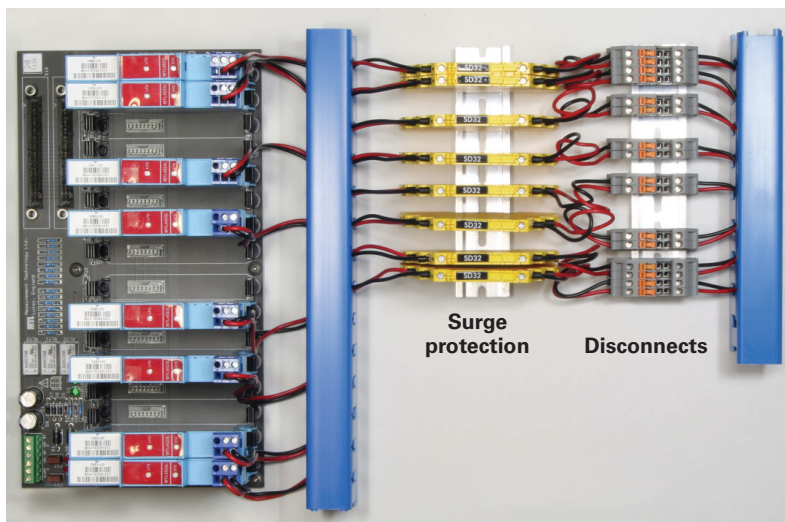
- Intrinsically safe isolators
- Signal conditioning
- Relay interfaces
- Surge protection
- Loop disconnect

The MTL SUM5 can typically reduce the number of marshalling component types on a bill of material from 20 to 7, simplifying procurement, commissioning and maintenance.

Plus, with the SUM5's modular design, late changes in I/O or surge can be easily accommodated at minimum cost and time.

## Reduce installation costs while saving valuable space in your control room

With the MTL SUM5 you can go from this:



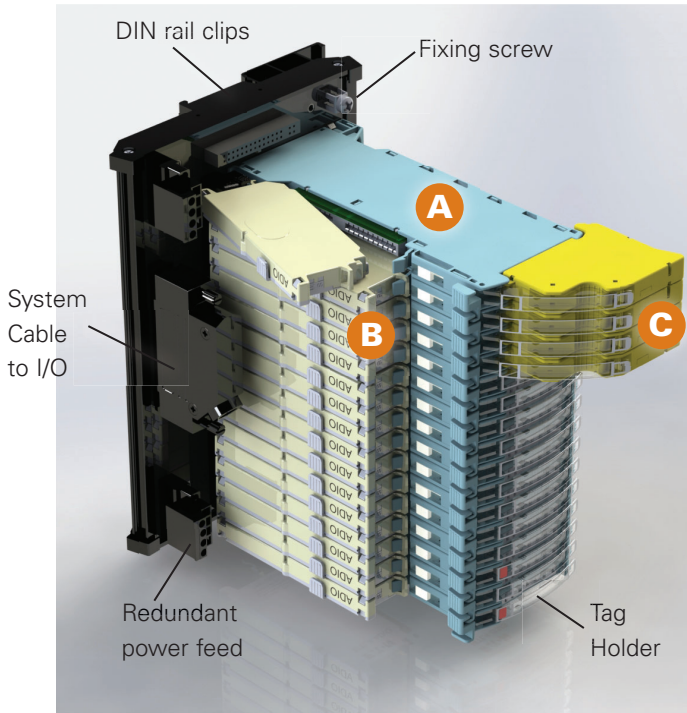
Intrinsic safety isolators

To this:



Each cabinet removed saves 3m<sup>2</sup> in the rack room and 270 kg in weight!

## MTL SUM5 Smart Universal Marshalling Solution - Design Features

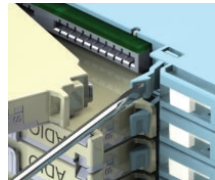


### Modular and configurable design reduces costs, optimizes productivity, and increases process up-time

- 5 marshalling functions in ONE design simplifies commissioning, start-up, maintenance and documentation
- Eliminates up to 8 connections per channel, the most common fault in marshalling cabinets
- Comprehensive diagnostics notify you when service is required
- Intelligent modules with LED indicators simplify commissioning and troubleshooting
- Components can be easily replaced. Replacement isolator automatically assumes channel configuration
- Extended -40°C to +70°C operating temperature range
- Designed for ATEX, IECEx and North American certification requirements

#### **A** Rugged Field Terminal Assembly (FTA)

- Available as intrinsically safe or general purpose versions
- 16 channel carrier with rugged field wiring connections
- Knife disconnect to isolate all four field terminal connections
- Clear plastic tag holder for channel identification



#### **B** Isolator Module

- Plugs into IS Field Termination Assembly for intrinsically safe applications or general purpose FTA for signal conditioning applications
- Configurable module for AI, AO, DI, and DO applications. Temperature input module for thermocouple, RTD and mV applications
- Functions can be mixed on the carrier
- Single channel module provides channel-to-channel isolation
- 3 port isolation
- Status and configuration LEDs to simplify commissioning and troubleshooting
- USB connection via carrier for simple configuration with PC

#### **C** Surge Protection Module

- Proven Hybrid GDT and suppression circuit with fast response and high surge current rating protects marshalling cabinet equipment, I/O, controller, etc.
- Surge protection tested to 10kA
- Add or replace surge protection without changes to the cabinet or wiring
- Uninterrupted signals during module installation and removal
- Surge modules can be easily added after the system is installed and commissioned, saving up-front costs when surge requirements may not be fully defined

**U.S. (Global Headquarters):  
Eaton's Crouse-Hinds Division**  
1201 Wolf Street  
Syracuse, NY 13208

(866) 764-5454  
FAX: (315) 477-5179  
FAX Orders Only:  
(866) 653-0640

[CrouseCustomerCTR@Eaton.com](mailto:CrouseCustomerCTR@Eaton.com)

**For more information:**  
If further assistance is  
required, please contact  
an authorised MTL  
Distributor, Sales Office,  
or Customer Service  
Department

**AUSTRALIA**

MTL Instruments Pty Ltd,  
10 Kent Road, Mascot, New South Wales, 2020, Australia  
Tel: +61 1300 308 374 Fax: +61 1300 308 463  
E-mail: [mtlsalesanz@eaton.com](mailto:mtlsalesanz@eaton.com)

**BeNeLux**

MTL Instruments BV  
Ambacht 6, 5301 KW Zaltbommel  
The Netherlands  
Tel: +31 (0)418 570290 Fax: +31 (0)418 541044  
E-mail: [mtl.benelux@eaton.com](mailto:mtl.benelux@eaton.com)

**CHINA**

Cooper Electric (Shanghai) Co. Ltd  
955 Shengli Road, Heqing Industrial Park  
Pudong New Area, Shanghai 201201  
Tel: +86 21 2899 3817 Fax: +86 21 2899 3992  
E-mail: [mtl-cn@eaton.com](mailto:mtl-cn@eaton.com)

**FRANCE**

MTL Instruments sarl,  
7 rue des Rosières, 69410 Champagne au Mont d'Or  
France  
Tel: +33 (0)4 37 46 16 53 Fax: +33 (0)4 37 46 17 20  
E-mail: [mtlfrance@eaton.com](mailto:mtlfrance@eaton.com)

**GERMANY**

MTL Instruments GmbH,  
Heinrich-Hertz-Str. 12, 50170 Kerpen, Germany  
Tel: +49 (0)22 73 98 12 - 0 Fax: +49 (0)22 73 98 12 - 2 00  
E-mail: [csckerpen@eaton.com](mailto:csckerpen@eaton.com)

**INDIA**

MTL India,  
No.36, Nehru Street, Off Old Mahabalipuram Road  
Sholinganallur, Chennai - 600 119, India  
Tel: +91 (0) 44 24501660 /24501857 Fax: +91 (0) 44 24501463  
E-mail: [mtlindiasales@eaton.com](mailto:mtlindiasales@eaton.com)

**ITALY**

MTL Italia srl,  
Via San Bovio, 3, 20090 Segrate, Milano, Italy  
Tel: +39 02 959501 Fax: +39 02 95950759  
E-mail: [chmninfo@eaton.com](mailto:chmninfo@eaton.com)

**JAPAN**

Cooper Crouse-Hinds Japan KK,  
MT Building 3F, 2-7-5 Shiba Daimon, Minato-ku,  
Tokyo, Japan 105-0012  
Tel: +81 (0)3 6430 3128 Fax: +81 (0)3 6430 3129  
E-mail: [mtl-jp@eaton.com](mailto:mtl-jp@eaton.com)

**NORWAY**

Norex AS  
Fekjan 7c, Postboks 147,  
N-1378 Nesbru, Norway  
Tel: +47 66 77 43 80 Fax: +47 66 84 55 33  
E-mail: [info@norex.no](mailto:info@norex.no)

**RUSSIA**

Cooper Industries Russia LLC  
Elektrozavodskaya Str 33  
Building 4  
Moscow 107076, Russia  
Tel: +7 (495) 981 3770 Fax: +7 (495) 981 3771  
E-mail: [mtlrussia@eaton.com](mailto:mtlrussia@eaton.com)

**SINGAPORE**

Cooper Crouse-Hinds Pte Ltd  
100G Pasir Panjang Road, Interlocal Centre  
#07-08 Singapore 118523  
Tel: +65 6645 9888 Fax: +65 6645 9811  
E-mail: [sales.mtlsing@eaton.com](mailto:sales.mtlsing@eaton.com)

**SOUTH KOREA**

Cooper Crouse-Hinds Korea  
7F Parkland Building 237-11 Nonhyun-dong Gangnam-gu,  
Seoul 135-546, South Korea.  
Tel: +82 6380 4805 Fax: +82 6380 4839  
E-mail: [mtl-korea@eaton.com](mailto:mtl-korea@eaton.com)

**UNITED ARAB EMIRATES**

Cooper Industries/Eaton Corporation  
Office 205/206, 2nd Floor SJ Towers, off. Old Airport Road,  
Abu Dhabi, United Arab Emirates  
Tel: +971 2 44 66 840 Fax: +971 2 44 66 841  
E-mail: [mtlgulf@eaton.com](mailto:mtlgulf@eaton.com)

**UNITED KINGDOM**

Eaton Electric Ltd,  
Great Marlings, Butterfield, Luton  
Beds LU2 8DL  
Tel: +44 (0)1582 723633 Fax: +44 (0)1582 422283  
E-mail: [mtlenquiry@eaton.com](mailto:mtlenquiry@eaton.com)

**AMERICAS**

Cooper Crouse-Hinds MTL Inc.  
3413 N. Sam Houston Parkway W.  
Suite 200, Houston TX 77086, USA  
Tel: +1 281-571-8065 Fax: +1 281-571-8069  
E-mail: [mtl-us-info@eaton.com](mailto:mtl-us-info@eaton.com)

**Eaton Electric Ltd,**  
Great Marlings, Butterfield, Luton  
Beds LU2 8DL, UK.  
Tel: + 44 (0)1582 723633 Fax: + 44 (0)1582 422283  
E-mail: [mtlenquiry@eaton.com](mailto:mtlenquiry@eaton.com)

[www.mtl-inst.com](http://www.mtl-inst.com)